

RYA-DHUB Dual Press Hold Up Button

The Ryalex Dual Press Hold up Button is a false alarm proof dual activator that can be securely mounted to the underside of a desk, table or wall.

Benefits:

- Meets the National Police Alarm Activation Response Guidelines for a Dual activated Hold Up Button.
- Dual End Of Line resistor values are "on board" selectable for either Tecom or Concept / Integriti alarm panels.
- "AND" or "OR" selectable button operation.
- Easy activation of the transmitter from a fixed position, whilst preventing false activations.
- Ergonomically designed without any sharp edges or protruding fasteners, complete with fixings and mounting hole flush caps.
- Injection moulded using polypropylene plastic which will resist any lateral or direct forces without cracking.



INSTALLATION MANUAL

Part No. RYA-DHUB

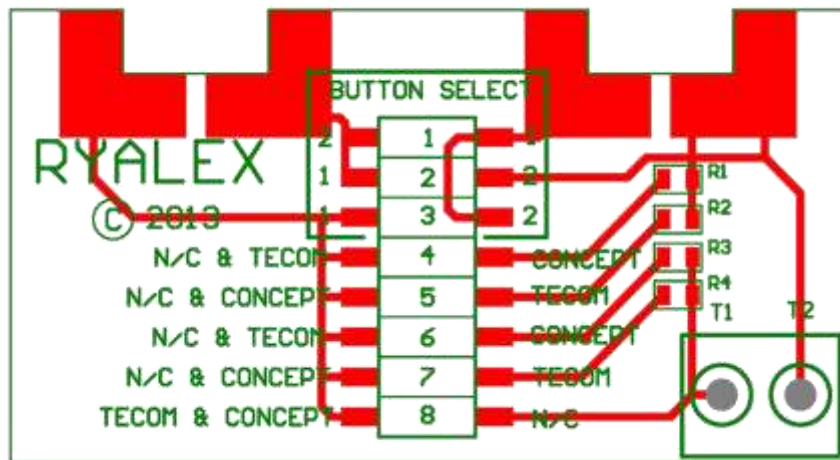
1. SELECTING SYSTEM OPERATION

Set all DIP switches to desired operation;

- DIP switches 1, 2 and 3 determine the and/or function of the push buttons
- DIP switches 4 to 8 must be set for Concept, Challenger or N/C operation

Note:

- a) By default the unit has been configured for 'AND' button operation for 10k connection to a Tecom Challenger
- b) Please ensure to remove the plastic wash cover from the DIP switch back prior to changing DIP switch positions



Specifications

Part #	RYA-DHUB
Material	Polypropylene
Colour	Matte Black housing, Red buttons
Dimensions	80 x 70 x 30 mm
Weight	Approx 40g
Compatibility	Tecom V8, Challenger 10, Concept 4000, Integriti

2. MOUNTING OPTIONS

If mounting to the underside of a desk

When mounting the unit to the underside of a desk, ensure the unit is installed no less than 40mm from the leading edge of the desk to prevent accidental activation

If mounting to a wall

When mounting the unit on a wall, ensure the unit is installed with the press buttons facing downward to prevent dirt and dust collecting in the button recesses which could adversely affect the operation of the unit